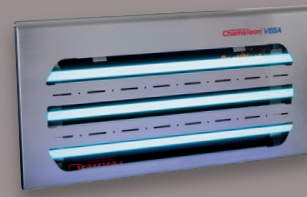


Environments:

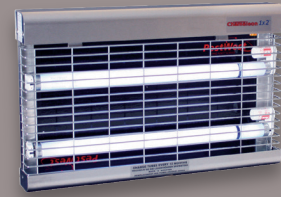
The best units for any food environment

Back of House

Efficient and reliable UV fly killers, designed for kitchen and storage environments.



CHAMELEON® VEGA



CHAMELEON® 1x2 / 2x2



SUNBURST® TAB

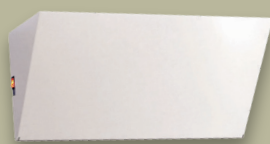


TITAN® 300



Front of House

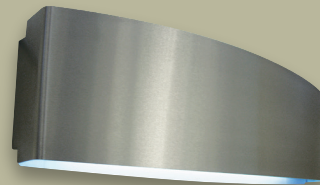
The perfect wall mounted or stand alone units, for any front of house lobby, bar and restaurant area.



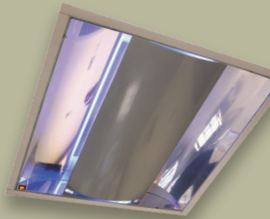
UPLIGHT



CHAMELEON® 1x2 DISCRETION



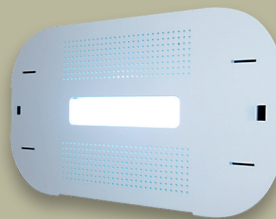
CHAMELEON SIRIUS



ON-TOP PRO2



SUNBURST®



SUNBURST® TAB



Outdoor Areas

An excellent system that fits into any outdoor environment.

Weatherproof outdoor hanging lamp style unit



TITAN® 200IP



You know when you're in safe hands!

www.killgerm.com

HOW?

Your Guide to Fly Control



Top tips for controlling fly infestations

- Identify the species.
- Remove the source of fly activity/breeding material.
- Keep flies out by proofing.
- Install suitable UV light fly traps.
- Use pesticides after careful assessment.



You know when you're in safe hands!

www.killgerm.com

HOW?

Your Guide to Fly Control

Tubes & Sticky Boards

- To maintain maximum effectiveness, tubes should be changed at least every 12 months, preferably at the onset of warmer weather.
- Quantum® tubes are recommended, as their effective lifespan is longer than most other tubes, which improves the fly control and reduces the amount of maintenance required.
- If the unit requires starters, replace them at the same time that you change the tubes.
- Use Reflectobakt® sleeves to maintain optimum fly control performance particularly when the glue board and the tubes are placed close together.
- Replace the sticky boards every 6 - 8 weeks to ensure maximum efficiency.



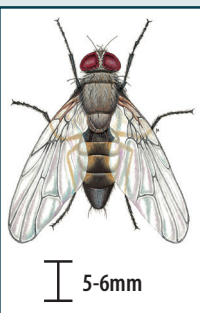
EFK Maintenance

- Use a Grid Tester to test the killing grid without shorting the high tension current onto the metal body of the machine.
- Use the PestWest UV-A Meter to monitor the condition and quality of UV tubes in any electronic flying insect light system, giving you instant indication of tube effectiveness and remaining life.
- Brush down the killing grid (only when it is turned off) to remove insect fragments.
- Empty the catch tray frequently.



Killgerm Chemicals Ltd., Wakefield Road,
Ossett, West Yorkshire, WF5 9AJ
t +44 (0) 1924 268420 e sales@killgerm.com

Fly identification

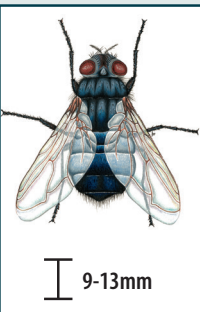


Lesser Housefly
Fannia canicularis

Features
Grey thorax with three indistinct longitudinal stripes. Abdomen has extensive area of yellow at base.

Control
PestWest sticky traps and fly killers are effective at controlling the lesser housefly.

5-6mm

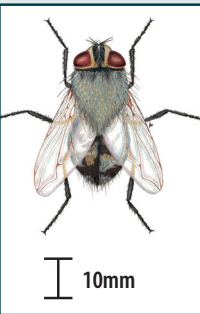


Blowfly
Calliphora spp.

Features
Thorax and abdomen black/blue in colour and often with a metallic appearance. Wingspan 18-20mm.

Control
All PestWest fly killers are a very effective step in controlling these pests.

9-13mm

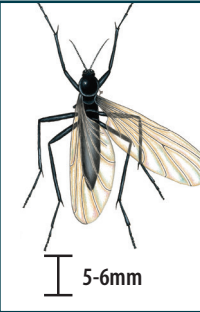


Cluster Fly
Pollenia rudis

Features
Large flies, wingspan up to 20mm. Thorax distinctive dark grey/olive colour covered in golden hairs.

Control
Areas where flies congregate should be treated with residual insecticide. PestWest fly killers are a very effective step in controlling cluster flies.

10mm

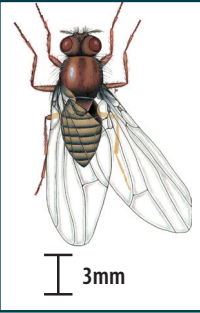


Mushroom/Fungus Fly
Sciar a thomae

Features
Small insects, wingspan 14-15mm. Black head, thorax and abdomen. Thorax has humped appearance.

Control
Chameleon® sticky traps are a very effective step in controlling mushroom flies.

5-6mm

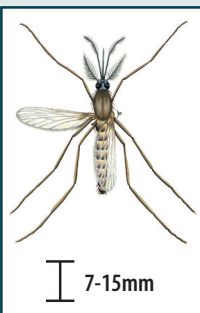


Fruit Fly
Drosophila spp.

Features
Small yellowish brown with darkly striped abdomen. Prominent red eyes.

Control
Chameleon® sticky traps are extremely effective at controlling these smaller insects.

3mm

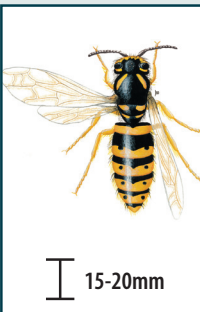


Mosquitoes
Culex spp.

Features
Slender, long-legged insect with forward-pointing, piercing and sucking mouthparts. Wingspan 7-15mm.

Control
PestWest units can be effective at catching mosquitoes.

7-15mm




Wasp
Vespula spp.

Features
Black head and thorax, black and yellow patterning on abdomen.

Control
PestWest sticky traps and electronic fly killers are particularly effective at attracting and controlling wasps.

15-20mm




Scuttle Fly/Phorid Fly
Megaselia spp.

Features
Thorax dark brown/tan with distinctive humped appearance.

Control
Chameleon® sticky traps and electronic fly killers are extremely effective at attracting and controlling these pests.

3-4mm




Biting Midge
Culicoides spp.

Features
Dark brown/black in colour. Wingspan 3-4mm. Will swarm in large numbers and inflict bites.

Control
Insect repellents should be used when outdoors to prevent bites. Chameleon® sticky traps will attract and control midges.

1.2-1.5mm



Common Housefly
Musca domestica

Features
Thorax grey with four longitudinal dark stripes. Sides of abdomen are yellowish and may be transparent. A dark band covers the final abdomen segments.

Control
PestWest fly killers and sticky traps will effectively control houseflies.

6-8mm

Diseases flies carry

- Mosquito-borne diseases: Chikungunya, Dengue, West Nile Virus, Yellow Fever Virus
- Housefly-borne diseases: Food poisoning organisms e.g. E.Coli, Salmonella
- MRSA
- Clostridium Difficile
- Hospital Associated Pathogens

How to choose the right fly killer

Front of House

Front of house installations are typically in restaurants, bars, cafés and hotel lobbies. For front of house areas the requirements are usually for aesthetically pleasing designs that blend with the décor and are silent in operation. For these installations sticky board traps designed as wall sconces or uplighters are an ideal choice.

Commercial

Commercial installations are usually small, medium and large retailers and kitchens. They are often places where food is being prepared or where open food is displayed. For hygiene and aesthetic reasons stainless steel construction is often specified. These demanding areas usually require large and powerful fly killers. Many installations are in public view so the design may still require aesthetically pleasing machines. Often a mixture of units that look like commercial equipment and units with discretion covers fitted are used.

Industrial

Industrial installations are usually factories and warehouses with large areas that need to be protected. Industrial fly killers are typically quite large and powerful industrial-looking units. These units can offer protection for areas up to 500m² with just one unit.

For a solution to all your flying insect control needs, refer to the model selection guide >>

Green Drain

Green Drain Valves are a new solution to an old problem.

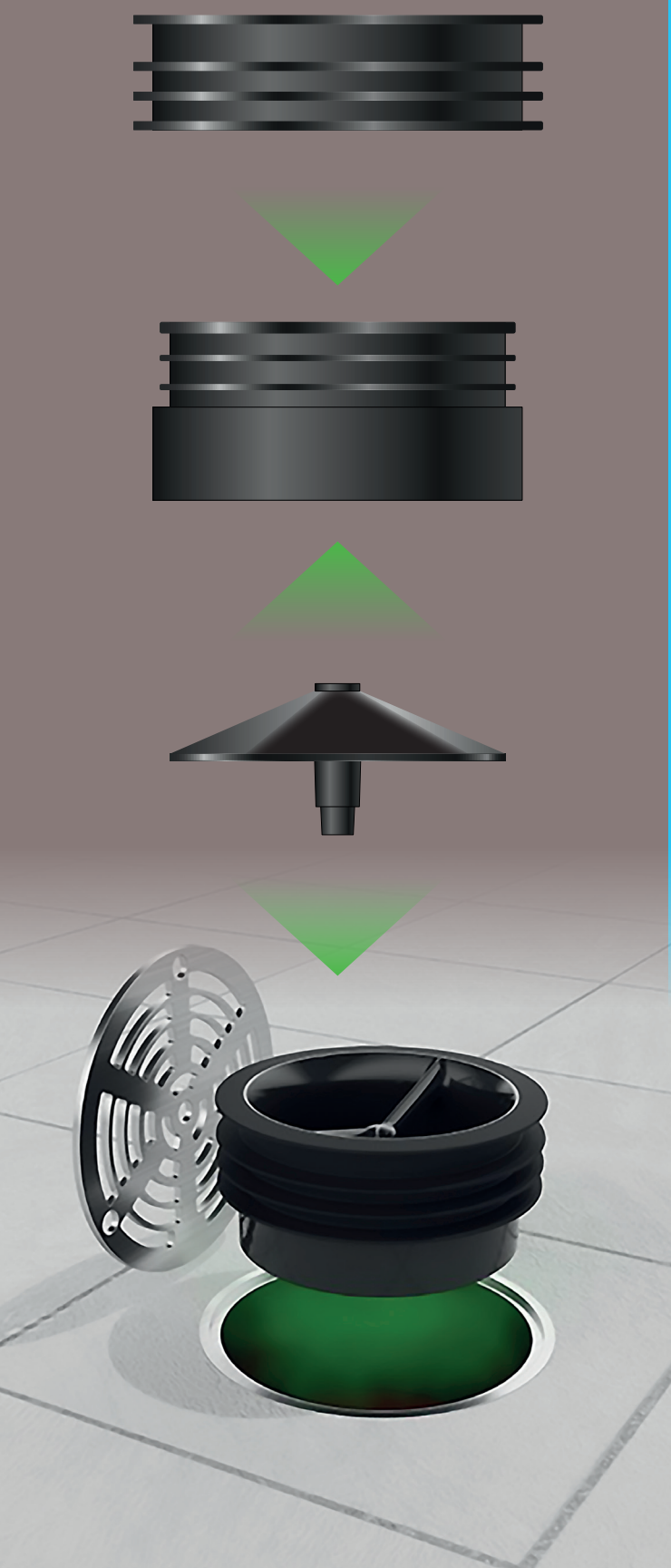
These one way valves create a seal which eliminate unpleasant odours from drains which are caused by bacteria, insects and pest activity.

The valves restrict breeding sites, for drain flies and other drain related insects but will not impede the flow of water.

A quick and easy solution to drainage problems and reduces the need for chemical based solutions.



How it works



PX Viribus™

PX Viribus™ is a powerful biological cleaning product that is biodegradable with non-toxic compounds.

Contains no pathogens, is non-caustic, non-corrosive and salmonella-free, utilising natural materials.

PX Viribus™ focuses on breaking down greases, fats, oils, proteins, carbohydrates and foul odours. Great for use in drains and commercial and domestic bins. Can also be used as a surface cleaner for walls and floors.



**ADVANCED FORMULA
SUPERIOR CLEANING**

Biologically enhanced cleaning formula to naturally remove organic debris.

